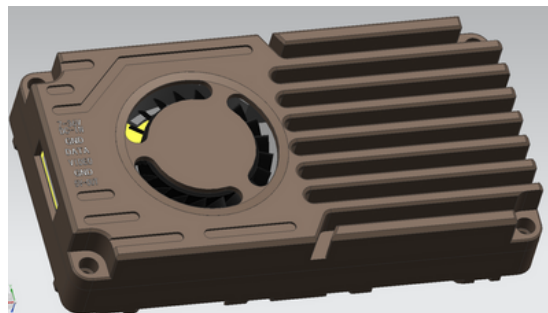


KEY FEATURES

- Channels: 16CH
- Control Protocol: IRC protocol
- Input voltage range: 7-36V
- Power Levels: 25mW / 400mW / 1000mW / 2500mW
- Antenna Interface: MMCX
- Video Format: PAL or NTSC camera
- Dimensions: L53.5 x W27.8 x H11.6mm
- Weight: 23.96g
- Mounting Compatibility: Supports 20x20mm mounting holes with M2 screws
- Stable Video Transmission: No-yaw digital phase-locked loop
- Channel Selection: "Band/CH button"-Long press to switch between FR1 and FR2 in a loop; Short press to switch between CH1 to CH8 in a loop.
- Power Adjustment: "Power button" -Short press to switch.



APPLICATIONS

- FPV Drone Racing
- UAV Communication Systems
- Remote Vehicle Monitoring
- Wireless Video Transmission Systems

BUTTON CONTROLS AND LED INDICATOR DEFINITIONS

1. Button 1 is the channel button:

- Short press: Switches between CH1 to CH8 in a loop.
- Long press: Switches between FR1 and FR2 in a loop.
- Frequency channel or band selection is cyclic.
- Refer to the table below for more details.

	CH1	CH2	CH3	CH4	CH5	CH6	CH7	CH8
Red LED (Band A)	Flash Once	Flashes Twice	Flashes 3 Times	Flashes 4 Times	Flashes 5 Times	Flashes 6 Times	Flashes 7 Times	Flashes 8 Times
Blue LED (Band B)	Flash Once	Flashes Twice	Flashes 3 Times	Flashes 4 Times	Flashes 5 Times	Flashes 6 Times	Flashes 7 Times	Flashes 8 Times

2. Button 2 is the power button:

- Press once to increase the power level by one step.
- After reaching the 4th level, it cycles back to the 1st level.

Power Levels (mW)	25MW	400MW	1000MW	2500MW
Green LED	Flash Once	Flashes Twice	Flashes 3 Times	Flashes 4 Times

3. Channel Corresponding Parameter Table

Channel Corresponding Parameters (MHz)								
Channel	CH1	CH2	CH3	CH4	CH5	CH6	CH7	CH8
FR A	3200	3220	3240	3260	3280	3300	3320	3340
FR B	3360	3380	3400	3420	3440	3460	3480	3500

6P 1.0 Pin Interface Definition

NO.	1	2	3	4	5	6
FUN	7-36V	GND	Video	IRC	5V out	GND
Color	Red	Black	Yellow	White	Red	Black

4. Wiring Table and Usage Notes:

- Ensure sufficient space around the module during installation to allow for airflow and proper heat dissipation. If the module overheats, it may activate thermal protection, reducing or even disabling power transmission.
- Before connecting power, verify that the voltage range is correct and the polarity is accurate to avoid damaging components.
- Confirm that the RF output port has an antenna installed before powering on to extend the module's lifespan.
- Read the user manual before use to ensure correct wiring and prolong the module's lifespan.

5. Packaging List

- One transmitting module host
- One MMCX adapter cable
- One mushroom antenna
- One cable

DISCLAIMER

! This product is intended for civilian and commercial use only. It is strictly prohibited from being used for any military purposes or activities.