



DIY Module Series

FPV Video Receiver

FS1264R

1080~2200MHz 64CH

KEY FEATURES

- Channel: 64CH
- Frequency Range: 1080~2200MHz
- Power Supply: +5V
- High Sensitivity Reception: -95dBm
- Supports RSSI signal detection
- High/Low Level Transition Channel
- Supports Soldering of 6-pin 1.27MM Dip Switch for Channel Switching
- Supports Secondary Development And DIY Enthusiasts
- Dimensions: L37 x W26.3mm

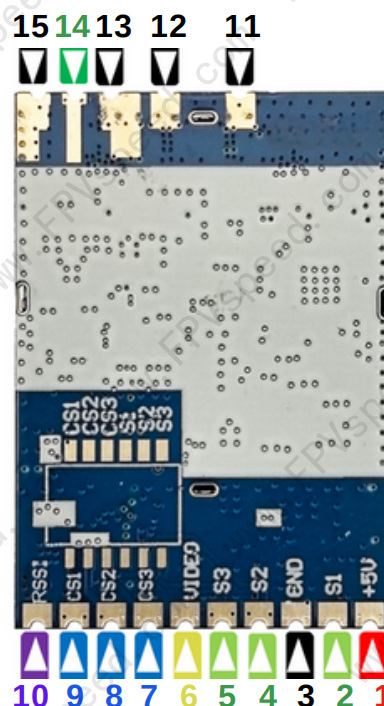


APPLICATIONS

- FPV Drone Racing
- UAV Communication Systems
- Remote Vehicle Monitoring
- Wireless Video Transmission Systems

THE WIRING DIAGRAM

Pin No.	Function
1	+5V IN
2	S1
3	GND
4	S2
5	S3
6	Video Out
7	CS3
8	CS2
9	CS1
10	RSSI
11	GND
12	GND
13	GND
14	ANT IN
15	GND





THE CHANNEL TABLE

FS1264R Receiver Module Channel Setting Table										
			CH1	CH2	CH3	CH4	CH5	CH6	CH7	CH8
0 represents ground or low level, 1 represents floating or high level.			CS3/CS2/ CS1	CS3/CS2/ CS1	CS3/CS2/ CS1	CS3/CS2/ CS1	CS3/CS2/ CS1	CS3/CS2/ CS1	CS3/CS2/ CS1	CS3/CS2/ CS1
			0/0/0	0/0/1	0/1/0	0/1/1	1/0/0	1/0/1	1/1/0	1/1/1
FR 1	S3/S2/S1	0/0/0	1920	1960	2000	2040	2080	2120	2160	2200
FR 2	S3/S2/S1	0/0/1	1900	1940	1980	2020	2060	2100	2140	2180
FR 3	S3/S2/S1	0/1/0	1740	1760	1780	1800	1820	1840	1860	1880
FR 4	S3/S2/S1	0/1/1	1720	1740	1760	1780	1800	1820	1840	1860
FR 5	S3/S2/S1	1/0/0	1420	1460	1500	1540	1580	1620	1660	1700
FR 6	S3/S2/S1	1/0/1	1400	1440	1480	1520	1560	1600	1640	1680
FR 7	S3/S2/S1	1/1/0	1100	1140	1180	1220	1260	1300	1340	1380
FR 8	S3/S2/S1	1/1/1	1080	1120	1160	1200	1240	1280	1320	1360

DISCLAIMER

⚠ This product is intended for civilian and commercial use only. It is strictly prohibited from being used for any military purposes or activities.