



Special long-range series

FPV Video Transmitter

VTX-S5

FPVspeed™

1.7/1.9G 1.6W 8CH

KEY FEATURES

- Channels: 8CH
- Control Protocol: IRC Tramp, OSD parameter adjustment
- Power Levels: PIT, 25mW, 200mW, 1600mW
- Input Voltage: 7-36VDC (2-6S)
- Output Voltage: 5VDC/0.5A
- Video Format: PAL/NTSC
- Design: Fan cooling compatible with 30.5mm x 30.5mm stack mounting
- Weight: 21g (excluding antenna)
- Dimensions: L50 x W37 x H19.6mm
- Antenna Interface: SMA connector (male thread, female pin)
- Modulation Type: FM
- Transmission Power: 32dBm ± 1dBm (MAX)
- Channel Selection: "CH button"- Short press to switch frequency points.
- Power Adjustment: "Power button" -Short press to switch.



APPLICATIONS

- FPV Drone Racing
- UAV Communication Systems
- Remote Vehicle Monitoring
- Wireless Video Transmission Systems

TRANSMITTER OPERATION AND ADJUSTMENT

1. POWER ADJUSTMENT INSTRUCTIONS

- Power Adjustment: Use "Power button" to adjust power levels. Short press to cycle between PIT, 25mW, 200mW, 1600mW.
- Power Indicator Light: Red light blinks to indicate power level: 25mW blinks once, 1600mW blinks three times. Long press for 3 seconds to enter PIT mode, with the red light remaining on.
- Temperature Protection: If the temperature exceeds 100°C, the power level will reduce stepwise until the lowest level (25mW) is reached. Once the temperature drops below 95°C, power will return to the original level.

Power Adjustment Red Indicator Light	PIT	25mW	200mW	1600mW
	Always On	Blinks Once	Blinks Twice	Blinks 3 Times

Note: The power levels of 200mW, 1600mW must be properly matched with an antenna. Otherwise, the power amplifier may burn out due to improper power transmission.



Special long-range series

FPV Video Transmitter

VTX-S5

FPVspeed™

1.7/1.9G 1.6W 8CH

2. FREQUENCY CHANNEL ADJUSTMENT

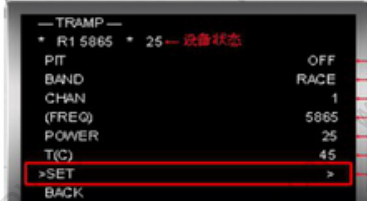
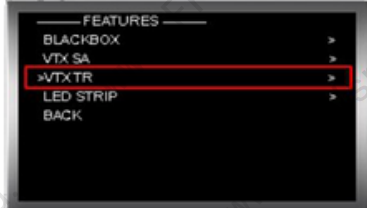
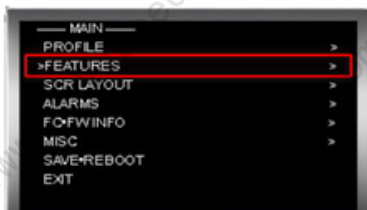
- Use "CH button" to adjust frequency channels. Short press to switch the channel.

Channel	CH1	CH2	CH3	CH4	CH5	CH6	CH7	CH8	
	1680 MHz	1720 MHz	1760 MHz	1800 MHz	1840 MHz	1880 MHz	1920 MHz	1960 MHz	
Short press to switch channels	Green Indicator Light	Blinks once	Blinks twice	Blinks 3 times	Blinks 4 times	Blinks 5 times	Blinks 6 times	Blinks 7 times	Blinks 8 times

3. REMOTE OSD PARAMETER ADJUSTMENT (TRAMP PROTOCOL)

- Flight controller controls the power levels of 25, 200, 1600, corresponding to the transmitter power levels: 25mW, 200mW, 1600mW.

★ OSD界面说明



— PIT 模式 —
PIT RACE 频段组选择
CHAN 1 频点选择
(FREQ) 5865 频率值显示
POWER 25 输出功率选择
(T) 45 温度显示
— SET — 选定后确定

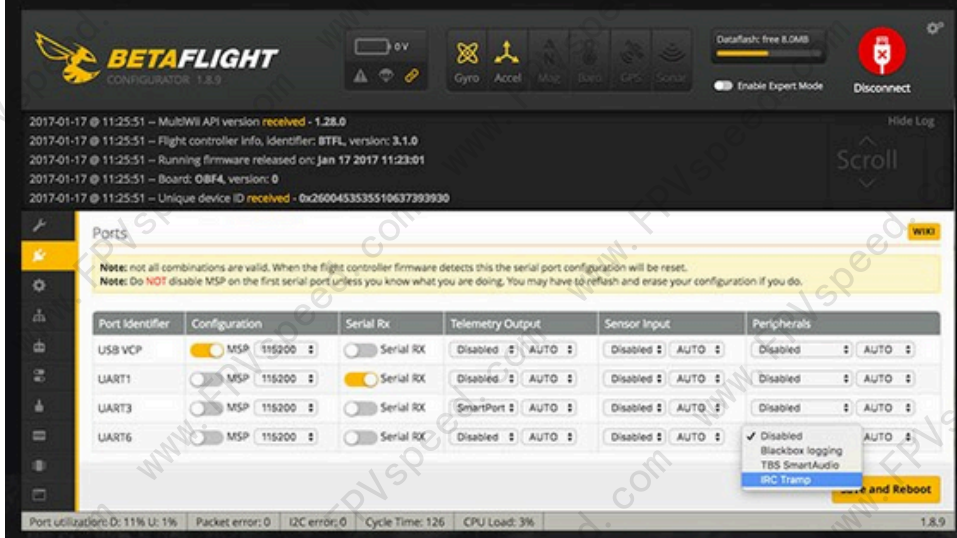
通过OSD界面远程调整图传发射频率和功率

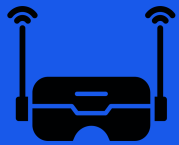
★ 硬件线路连接

将图传RX连接到飞控硬件空余的Uart (TX) 端口 (参考下方连线方式2)。

★ 地面站软件配置

- 选择端口选项卡；
- 参考下图，如图设置对应端口的Peripherals菜单。





FPVspeed™

Special long-range series

FPV Video Transmitter

VTX-S5

1.7/1.9G 1.6W 8CH

PRECAUTIONS

- Please install the antenna before powering on to avoid equipment malfunction.
- Select the appropriate operating frequency and set both the transmitter and receiver to the same frequency (refer to the frequency table for details).
- The transmitter has high power output. Do not touch the casing while it is in operation to avoid burns (the casing becoming hot is normal; please use it with confidence).
- If the casing is removed to reduce weight, the product can still be used normally, but the transmission power may slightly decrease due to increased temperature of the transmitter.
- Input voltage is 7-36V (2-6S). Do not exceed this voltage range.
- Output voltage/current is 5V/0.5A. Ensure the camera is within this voltage/current range. If the camera current exceeds 0.5A, do not use the voltage output from this product, as it may damage the transmitter's power module.
- Both 5V and 5V-OUT are output ports. Do not connect to power input or battery to avoid damage.

DISCLAIMER

⚠ This product is intended for civilian and commercial use only. It is strictly prohibited from being used for any military purposes or activities.